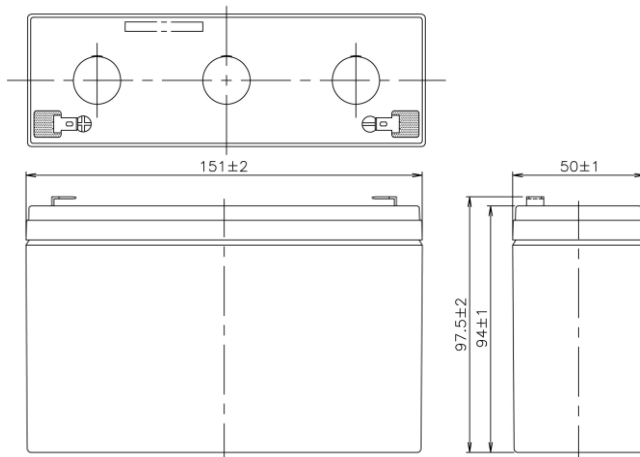


## NP12-6

### 尺寸 DIMENSION



### 規範 Specification

- |   |   |                      |            |                      |          |            |                      |
|---|---|----------------------|------------|----------------------|----------|------------|----------------------|
| <ul style="list-style-type: none"> <li>☞ 公稱電壓 Nominal Voltage : 6V</li> <li>☞ 尺寸 Dimension           <ul style="list-style-type: none"> <li>長度 Length : 151±2mm</li> <li>寬度 Width : 50±1mm</li> <li>高度 Case Height : 94±1mm</li> <li>總高 Overall Height : 97.5±2mm</li> </ul> </li> <li>☞ 重量 Weight (約 Approx.) : 2 kg</li> <li>☞ 公稱容量 Nominal Capacity : 12AH / 20HR (25°C)</li> <li>☞ 內部抵抗 Internal Resistance(Approx.) : 約 6.6 mΩ</li> <li>☞ 最大充電電流 Max. Charge current : 3A</li> <li>☞ 5秒最大放電電流           <ul style="list-style-type: none"> <li>Max. Discharge current in 5 seconds : 180A</li> </ul> </li> <li>☞ 浮動充電 Float Charging : 6.83±0.08V (25°C)</li> <li>☞ 端子 Terminal :           <ul style="list-style-type: none"> <li>插入式端子 Faston tab : 187 / 250</li> </ul> </li> </ul> | <ul style="list-style-type: none"> <li>☞ 操作溫度範圍 Operating Temperature Range           <ul style="list-style-type: none"> <li>放電 Discharging -15°C to 45°C</li> <li>充電 Charging -15°C to 45°C</li> <li>放置 Storage -15°C to 45°C</li> </ul> </li> <li>☞ 期待浮充壽命 Expected float use life (25°C) : 3~5 years</li> <li>☞ 容易保養 Easy Maintenance           <ul style="list-style-type: none"> <li>不會洩漏電解液 No electrolyte leakage</li> <li>確保操作安全性 Ensure safe and efficient operation</li> </ul> </li> <li>☞ 電槽材質 Container Material :           <table border="0" style="width: 100%; margin-left: 20px;"> <tr> <td>NP12-6</td> <td>難燃等級UL94HB</td> <td>Flame class : UL94HB</td> </tr> <tr> <td>NP12-6FR</td> <td>難燃等級UL94V0</td> <td>Flame class : UL94V0</td> </tr> </table> </li> <li>☞ 用途 Applications :           <ul style="list-style-type: none"> <li>UPS 不斷電系統、電信、緊急照明、警報系統、儀器、太陽能發電系統</li> <li>UPS(Uninterruptible Power Supply)、Telecommunications、Emergency lighting、Alarm systems、Instrumentation、Solar powered systems</li> </ul> </li> </ul> | NP12-6               | 難燃等級UL94HB | Flame class : UL94HB | NP12-6FR | 難燃等級UL94V0 | Flame class : UL94V0 |
| NP12-6  | 難燃等級UL94HB  | Flame class : UL94HB |            |                      |          |            |                      |
| NP12-6FR  | 難燃等級UL94V0  | Flame class : UL94V0 |            |                      |          |            |                      |

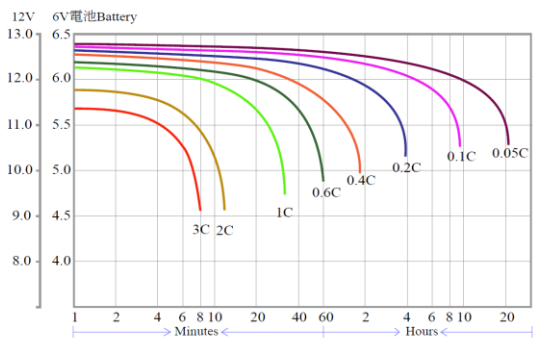
# NP12-6 性能規格 PERFORMANCE SPECIFICATION : 安培 Amperes and 瓦特 Watts at 25 °C ( 77 °F )

F.V.	TIME	3M	5M	6M	8M	10M	15M	30M	1H	2H	3H	5H	10H	20H
		W	A	W	A	W	A	W	A	W	A	W	A	W
5.40V	W	296	252	237	199	179	137	83	48.1	26.0	18.6	12.1	6.39	3.55
	A	53.0	44.5	41.7	35.1	31.4	23.5	14.1	8.09	4.41	3.15	2.07	1.08	0.58
5.25V	W	331	270	250	210	186	140	84	48.7	26.6	19.0	12.5	6.57	3.57
	A	60.4	48.6	44.6	37.5	32.9	24.3	14.4	8.20	4.46	3.18	2.08	1.09	0.59
5.10V	W	361	286	260	219	190	147	85	49.2	26.9	19.2	12.6	6.64	3.58
	A	67.1	51.5	46.1	38.8	33.3	24.5	14.6	8.2	4.49	3.20	2.10	1.10	0.59
5.01V	W	365	289	262	221	192	148	86	49.4	27.1	19.3	12.7	6.70	3.62
	A	68.1	52.5	47.2	39.7	34.2	24.9	14.7	8.3	4.52	3.23	2.11	1.11	0.59
4.80V	W	398	303	270	228	195	150	87	49.7	27.3	19.5	12.8	6.77	3.66
	A	76.3	56.2	49.3	41.5	34.8	25.2	14.8	8.3	4.55	3.25	2.13	1.12	0.60

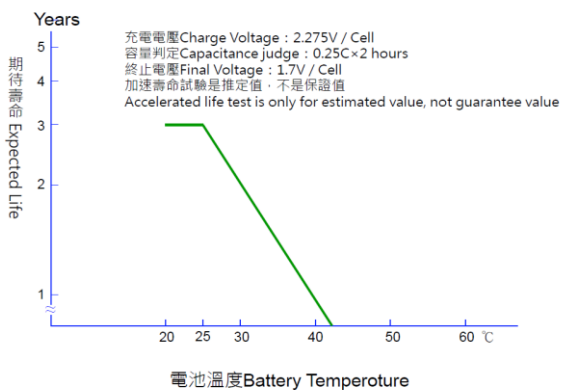
## 特性 Characteristics

### 放電特性 DISCHARGE CHARACTERISTICS

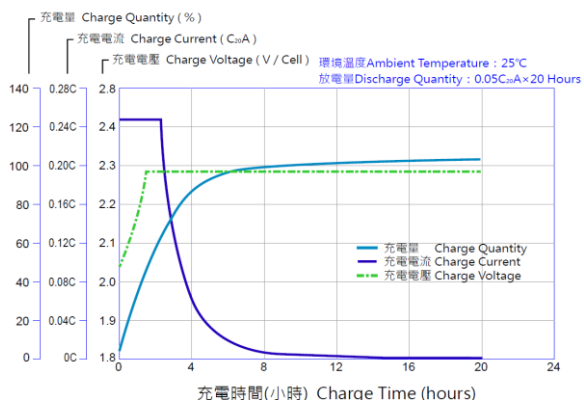
放電曲線 Discharge Characteristics Curves at 25°C



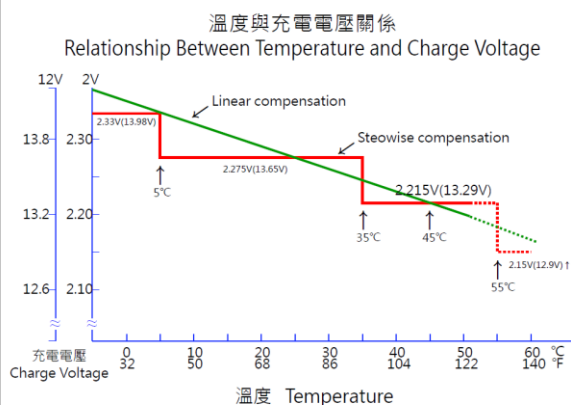
### 浮充期待壽命 Float Service Life



### 充電特性 CHARGE CHARACTERISTICS



### 充電電壓 CHARGE VOLTAGE



臺灣湯淺電池股份有限公司 新北市新莊區福營路 227 巷 11 號 TEL:(02)2901-8261 FAX:(02)2903-9626  
 TAIWAN YUASA BATTERY CO.,LTD No.11, Ln. 227, Fuying Rd., Xinzhuang Dist., New Taipei City http://www.yuasa.com.tw/